

E3631A-09C

S E R V I C E N O T E

Supersedes:
E3631A-09B

E3631A DC Power Supply

Serial Numbers: MY40000001 through MY40023860, SG40000001 through SG40015088

On +6V output unit shows current drawn without load

To Be Performed By: Agilent-Qualified Personnel or Customer

Parts Required:

P/N	Description	Qty.
1826-2420	IC OP AMP LOW-POWER-BIPOLAR-DUAL 8-SOIC	2
1853-0590	TRANSISTOR 2N4036 PNP SI TO-5 PD=1W	2

ADMINISTRATIVE INFORMATION

SERVICE NOTE CLASSIFICATION:			
MODIFICATION RECOMMENDED			
ACTION CATEGORY:	<input type="checkbox"/> IMMEDIATELY <input checked="" type="checkbox"/> ON SPECIFIED FAILURE <input type="checkbox"/> AGREEABLE TIME	STANDARDS: LABOR: 0.2 Hours	
LOCATION CATEGORY:	<input type="checkbox"/> CUSTOMER INSTALLABLE <input type="checkbox"/> ON-SITE <input checked="" type="checkbox"/> SERVICE CENTER	SERVICE INVENTORY: <input type="checkbox"/> RETURN <input type="checkbox"/> SCRAP <input checked="" type="checkbox"/> SEE TEXT	USED PARTS: <input type="checkbox"/> RETURN <input type="checkbox"/> SCRAP <input checked="" type="checkbox"/> SEE TEXT
AVAILABILITY:	PRODUCT'S SUPPORT LIFE	AGILENT RESPONSIBLE UNTIL: Always	
AUTHOR: CH PRODUCT LINE: WC			
ADDITIONAL INFORMATION: Perform quick verification if unit fails, return to factory if unresolved.			

© AGILENT TECHNOLOGIES, INC. 2007
PRINTED IN U.S.A.



March 19, 2007

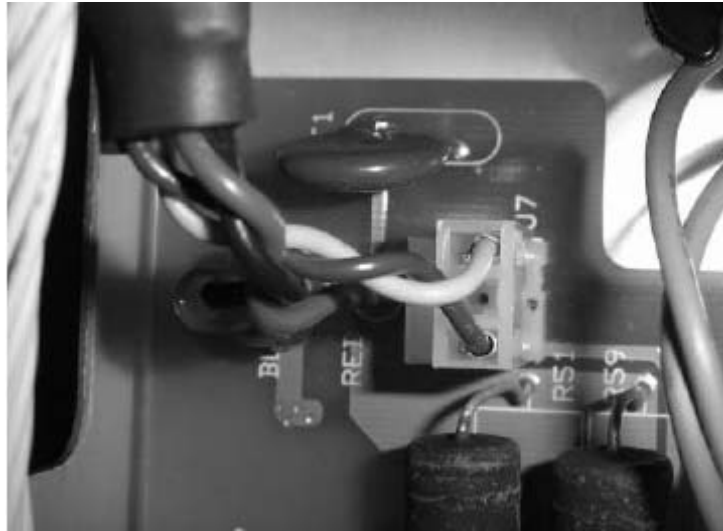
Situation:

On +6V output, the power supply shows current drawn even though there is no load being connected.

Solution/Action:

1. Solder the yellow and blue wires directly to J7 (part number: 1252-2786) on the E3631-60004 (Bottom PCA Board). Below pictures are showing the changes being performed.

Before – Yellow and Blue wires are connected to PCB with a connector jack.

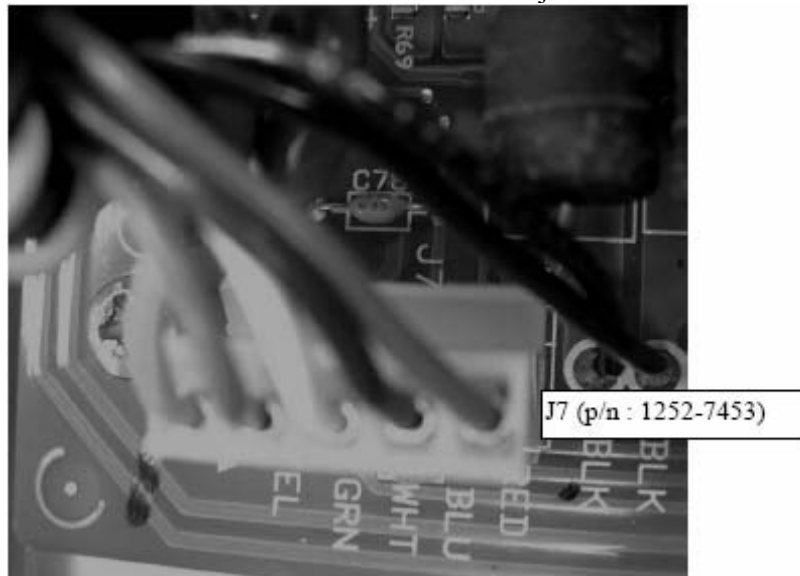


Solution - Yellow and Blue wires are soldered directly to J7.

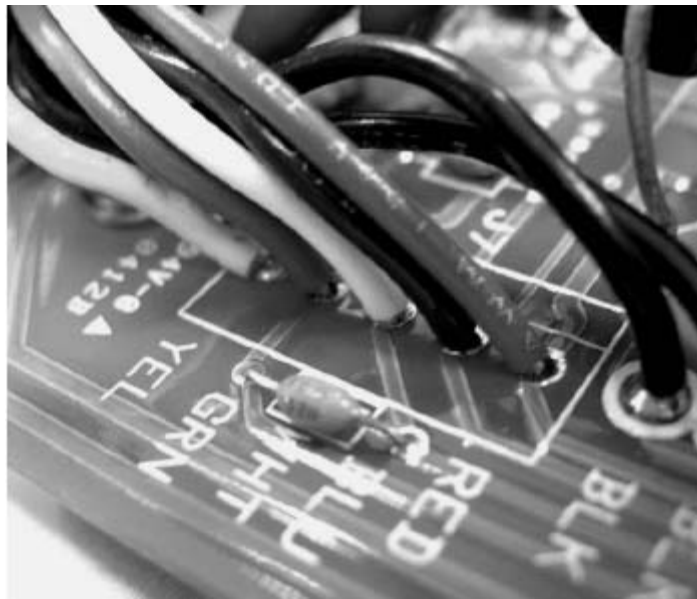


2. Remove J7 (part number 1252-7453) and solder the wires directly onto the PCB according to the colors indicated on the E3631-60002 (Top PCA Board).

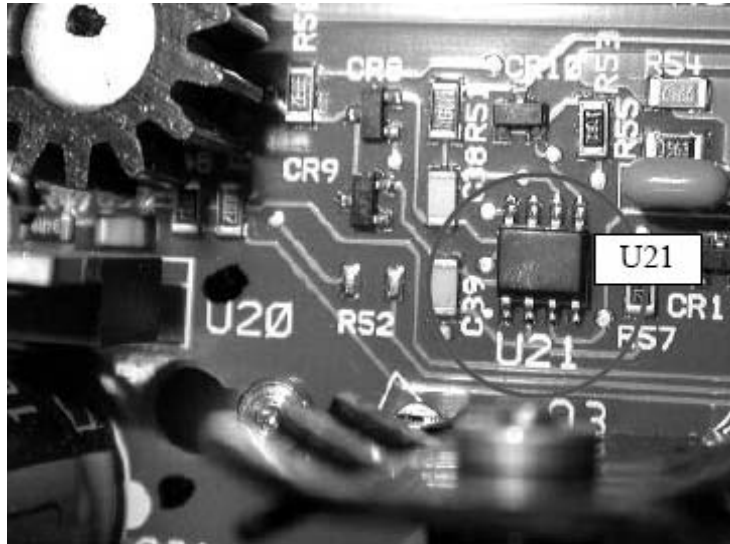
Before – All 5 wires are connected to PCB within a connector jack.



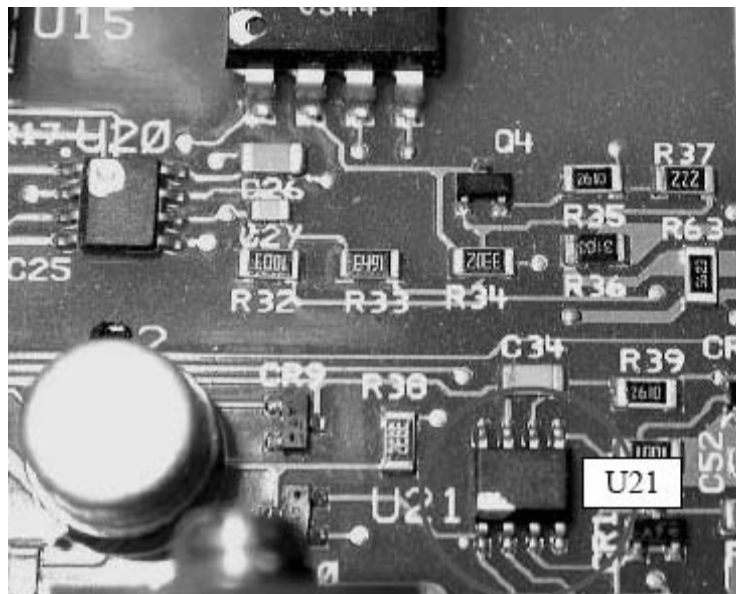
Solution – All 5 wires soldered directly to PCB board according to the indicated colors.



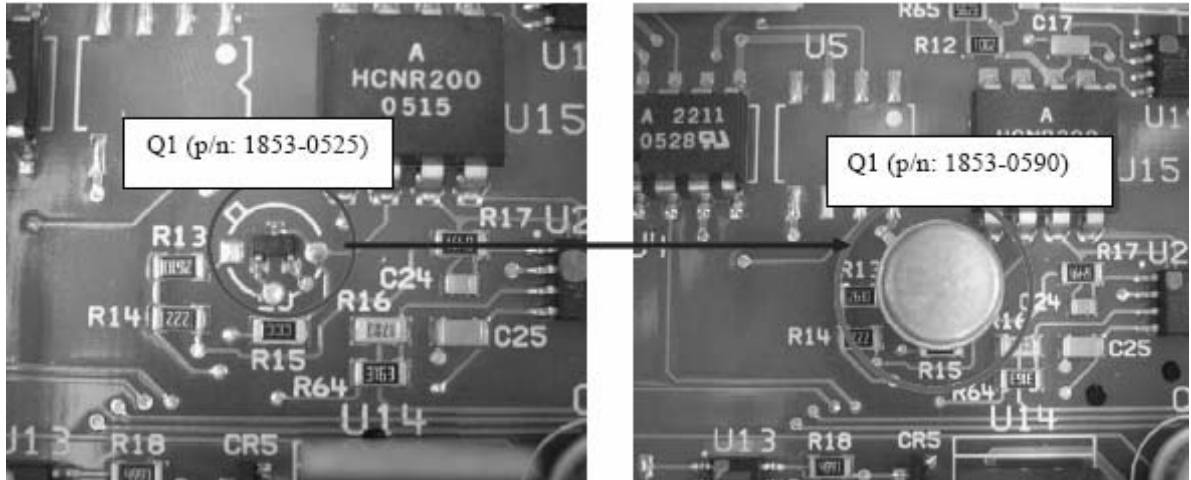
3. Change the U21 from part number 1826-1862 to part number 1826-2420 on E3631-60002 (Top PCA Board).



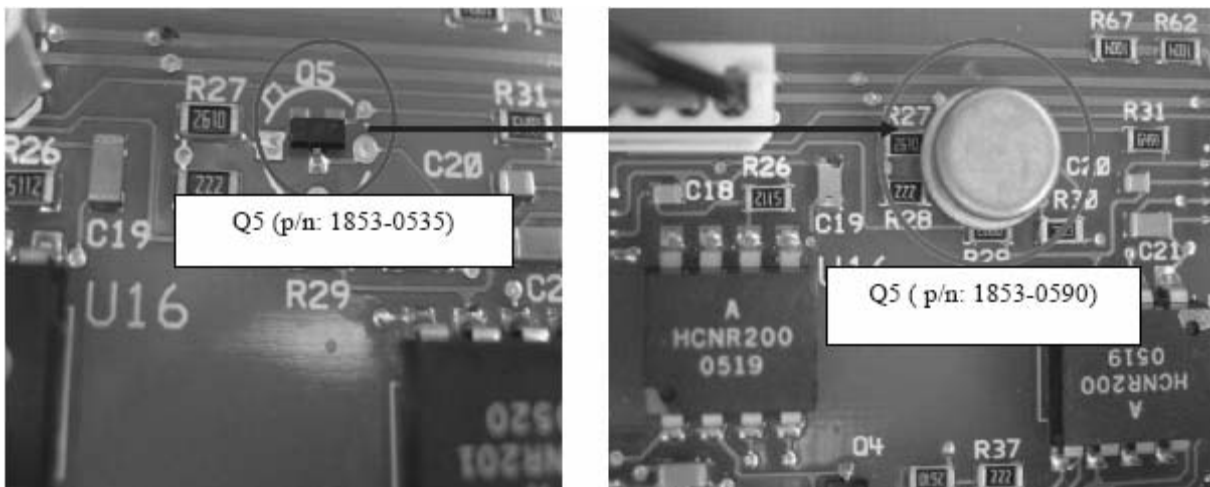
4. Change the U21 from part number 1826-1862 to part number 1826-2420 on E3631-60004 (Bottom PCA Board).



5. Change transistor Q1 from part number 1853-0525 to 1853-0590 on E3631-60004 (Bottom PCA Board).



6. Change transistor Q5 from part number 1853-0525 to 1853-0590 on E3631-60004 (Bottom PCA Board).



7. Recalibrate the unit after all the above changes are applied.